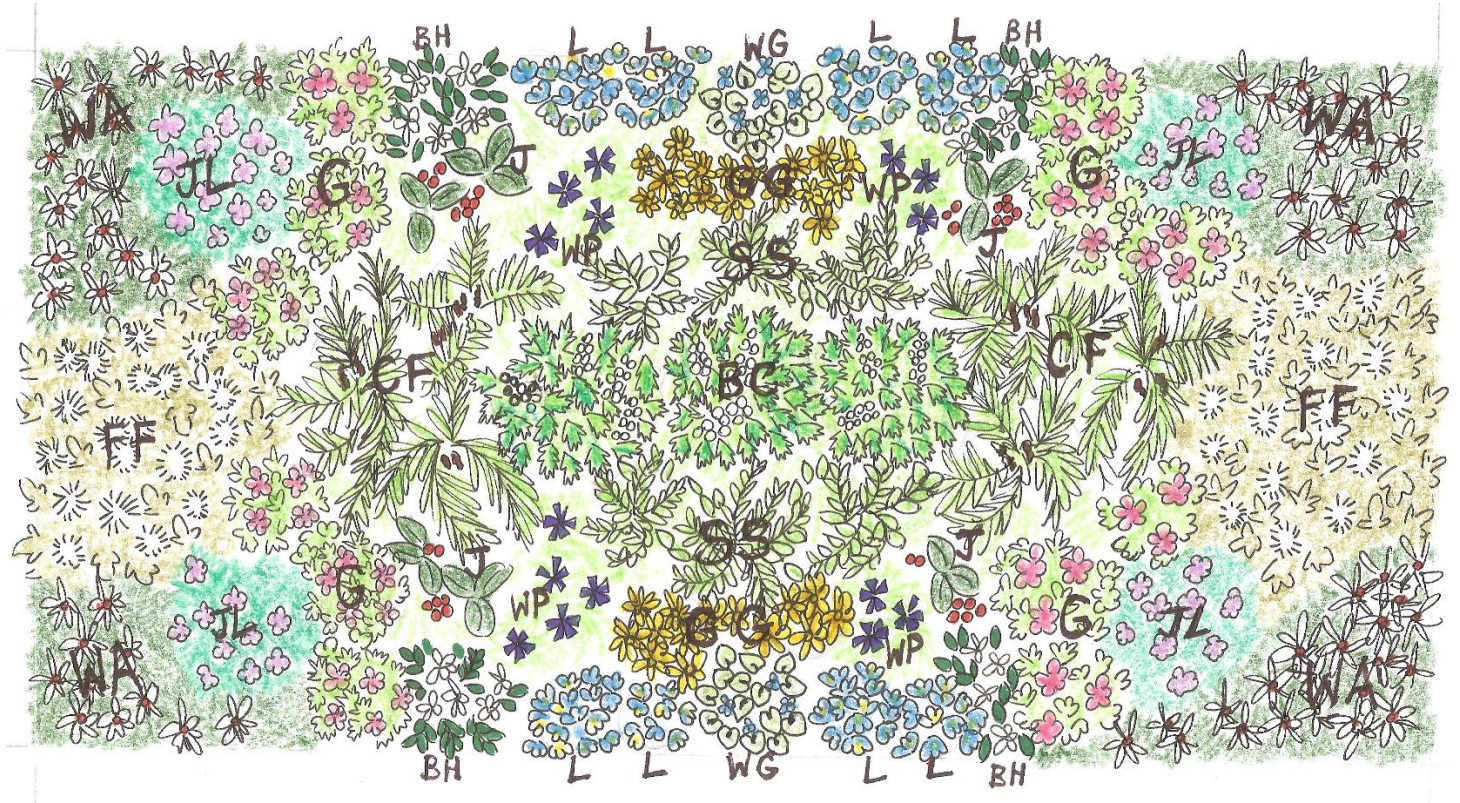


Shady Native Perennial Pollinator Garden Bed Template

A Collaboration between Wild Seed Project and Portland Pollinator Partnership

8" x 10"



This template can be adapted to a number of garden shapes and sizes.

KEY

BC	Black Cohash (2)	<i>Actaea racemosa</i>
BH	Bush Honeysuckle (12)	<i>Diervilla lonicera</i>
CF	Cinnamon Fern (6)	<i>Osmundastrum cinnamomeum</i>
FF	Foam Flower (10)	<i>Tiarella cordifolia</i>
G	Geranium (12)	<i>Geranium maculatum</i>
GG	Golden Groundsel (12)	<i>Packera aurea</i>
J	Jack in the Pulpit (4)	<i>Arisaema triphyllum</i>
JL	Jacob's Ladder (4)	<i>Polemonium reptans</i>
L	Blue Lobelia (8)	<i>Lobelia siphilitica</i>
SS	Solomon's Seal (6)	<i>Polygonatum commutatum</i>
WA	Wood Aster (12)	<i>Eurybia divaricata</i>
WG	Wild Ginger (6)	<i>Asarum canadensis</i>
WP	Wood Phlox (12)	<i>Phlox divaricata</i>

Total: 106 plants

Shady Native Perennial Pollinator Garden Bed (Side View)

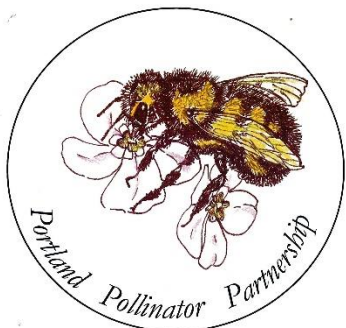
A Collaboration between Wild Seed Project and Portland Pollinator Partnership

8" x 10"



Advantages of planting a perennial native garden bed:

- After the initial planting cost, this garden is far more sustainable and lower maintenance than traditional gardens.
- This garden is environmentally friendly.
- This garden restores native habitat to pollinators.
- This garden requires no pesticides, reducing harmful chemicals.



**Wild Seed
Project**
Returning native plants
to the Maine landscape

www.wildseedproject.net

