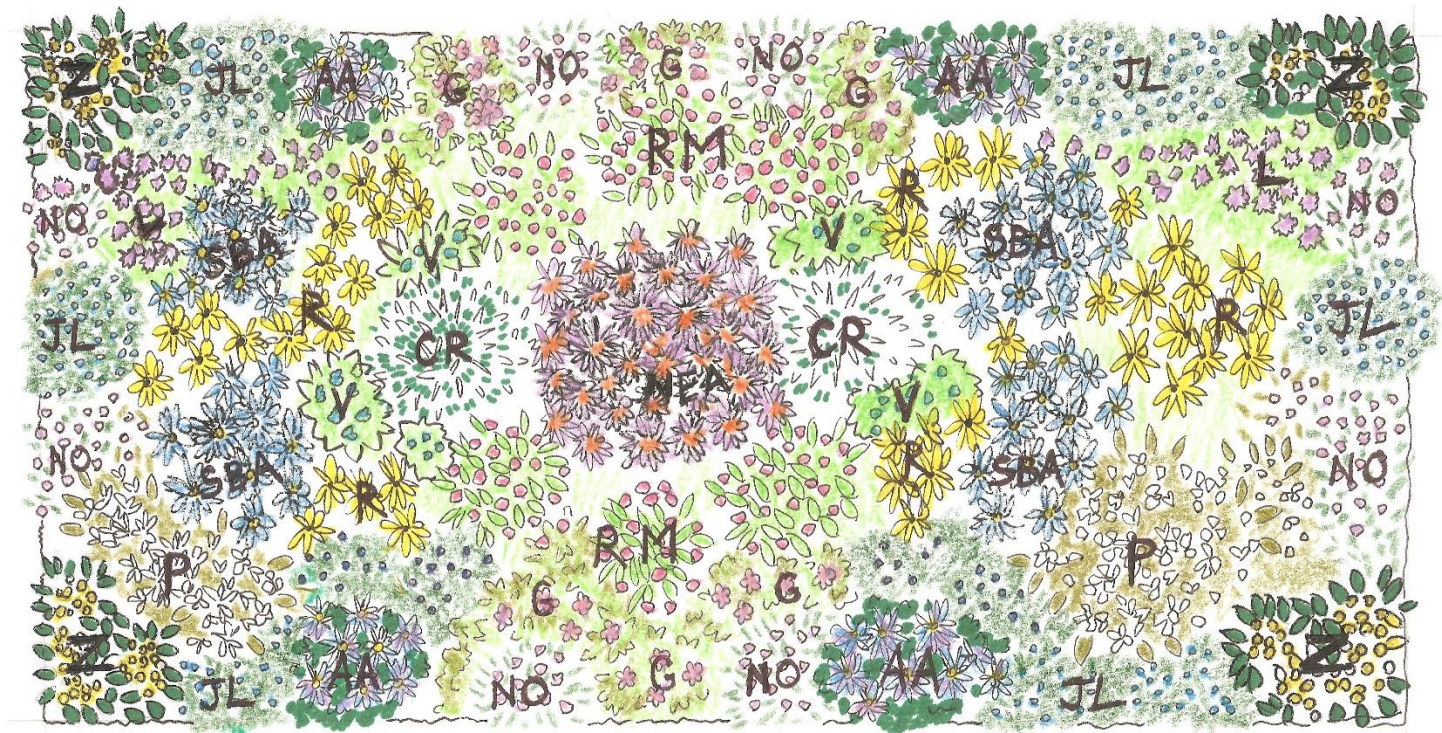


Sunny Native Perennial Pollinator Garden Bed Template

A Collaboration between Wild Seed Project and Portland Pollinator Partnership

8" x 10"



This template can be adapted to a number of garden shapes and sizes.

KEY

AA	Aromatic Aster (4)	<i>Aster oblongifolius</i>
CR	Culvers Root (2)	<i>Veronicastrum virginicum</i>
G	Wild Geranium (6)	<i>Geranium maculatum</i>
JL	Jacob's Ladder (14)	<i>Polemonium reptans</i>
L	Liatris (12)	<i>Liatris aspera</i>
NEA	New England Aster (1)	<i>Aster novae-angliae</i>
NO	Nodding Onion (8)	<i>Allium ceruum</i>
P	Beardtongue Penstemon (6)	<i>Penstemon digitalis</i>
R	Black-eyed Susan (Rudbeckia) (6)	<i>Rudbeckia hirta</i>
RM	Rose Milkweed (6)	<i>Asclepias incarnata</i>
SBA	Smooth Blue Aster (4)	<i>Aster laevis</i>
V	Blue Vervain (4)	<i>Verbena hastata</i>
Z	Heart-leaved Alexander (Zizia) (12)	<i>Zizia aptera</i>

Total: 85 plants

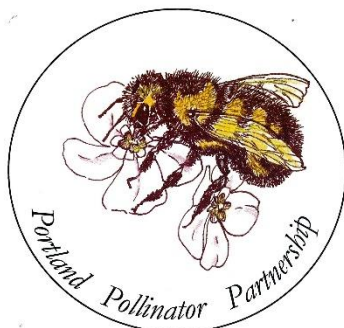
Sunny Native Perennial Pollinator Garden Bed Template (Side View)

A Collaboration between Wild Seed Project and Portland Pollinator Partnership



Advantages of planting a perennial native garden bed:

- After the initial planting cost, this garden is far more sustainable and lower maintenance than traditional gardens.
- This garden is environmentally friendly.
- This garden restores native habitat to pollinators.
- This garden requires no pesticides, reducing harmful chemicals.



**Wild Seed
Project**
Returning native plants
to the Maine landscape

www.wildseedproject.net

